

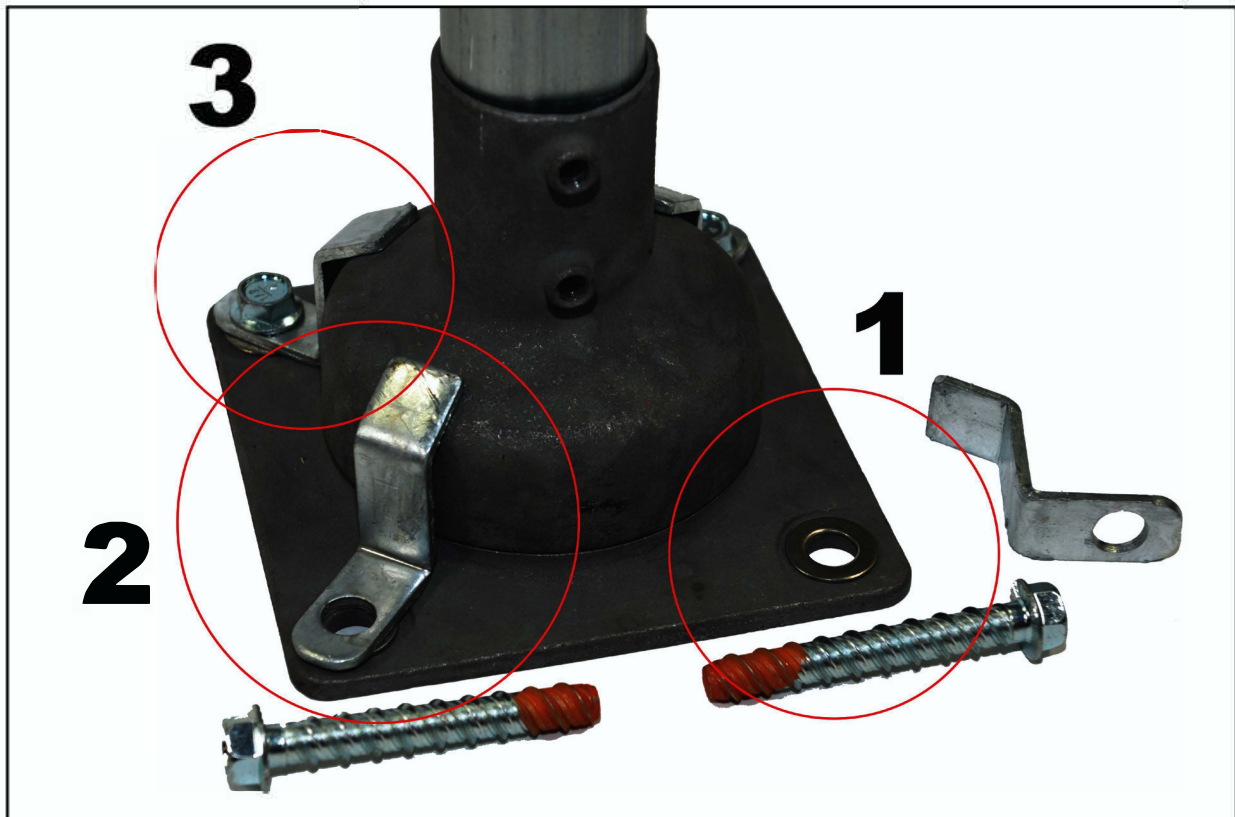
# FLEXPOST-XL™ DETENT ANCHORING INSTRUCTIONS

## Tools Required:

- Socket Wrench

## Parts Included:

- 4 Detent Washers
- 4 Detent Brackets



- 1. Put washer on the base plate***
- 2. Put detent bracket over the washer***
- 3. See concrete or asphalt anchoring instructions (next page)***

**FLEX**  
**POST**

339 1/2 Centre St.  
Petrolia, ON. N0N 1R0  
888-307-6610 • [www.Flexpost.ca](http://www.Flexpost.ca)