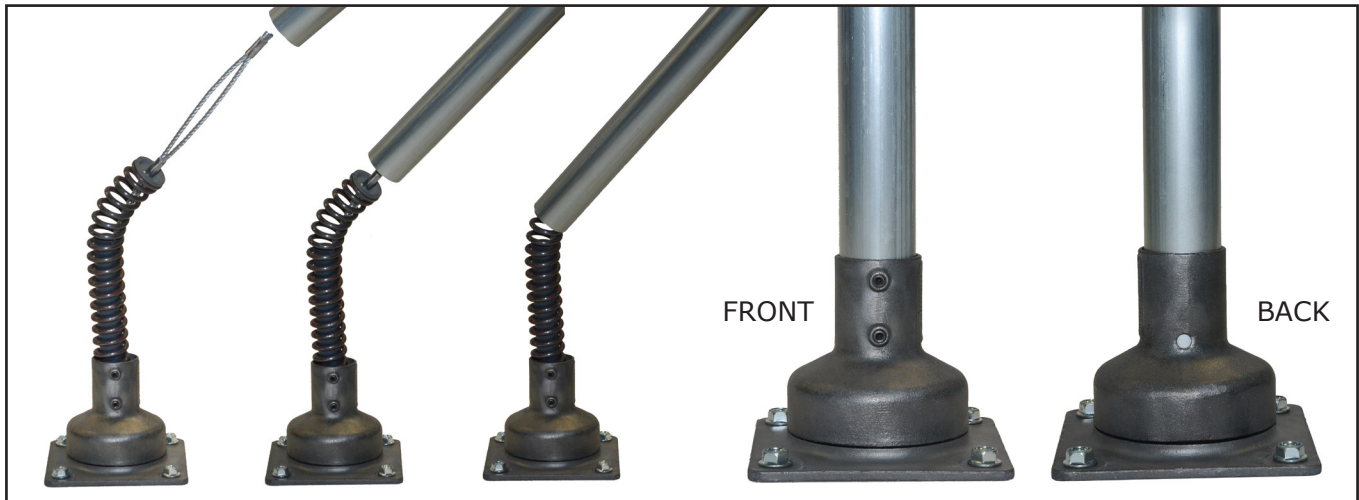
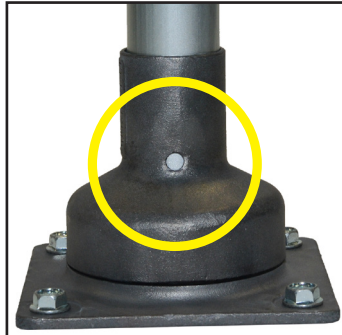


# FLEXPOST-XL™ ASSEMBLY INSTRUCTIONS FOR XL-6PSK, XL-8PSK, XL-9PSK

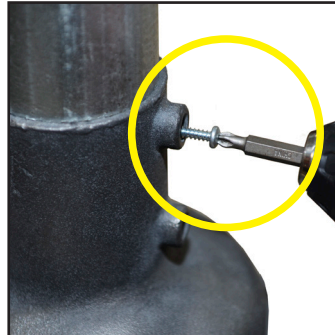
**BEFORE STARTING, MAKE SURE YOUR BASE IS ANCHORED (SEE BASE ANCHORING INSTRUCTIONS)**



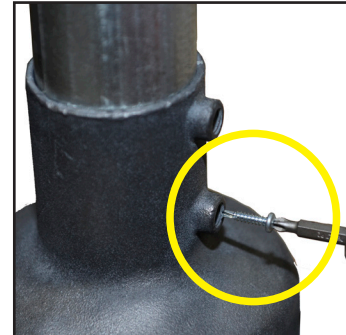
- *Insert the post onto the base. NOTE: The spring should be curved*
- *Rotate clockwise while sliding the post down until it is fully seated at the bottom*
- *If you're having trouble, try rotating the pole back and forth while pushing downward*



- *Make sure the post is fully visible in the back window of the base*

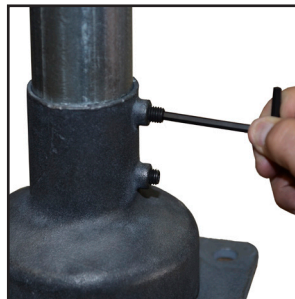


- *Using a power drill, screw in both of the provided self-tapping set screws into the front two holes to secure the post to the base*



- *Using provided allen key, screw the grub screws into the base to hide the set screws*

- *Make sure both philips head self-tapping set screws are fully inside the base*



- *They may stick out from the base. This is not a problem. Do not over tighten.*

**FLEX  
POST®**

339 1/2 Centre St., Petrolia, ON N0N1R0  
888-307-6610 • [www.flexpost.ca](http://www.flexpost.ca)